

Insights into the industry and the company || September 2025

# Inside

**wpd confirms position  
among German market leaders**

Page 2



**Compensation measures  
for the energy transition**

Page 3

**wpd implements  
PV projects in Europe**

Page 6



## Right on track –

*wpd confirms position  
among German market leaders*

wpd is maintaining its strong trajectory. Since 2024 which was a successful year primarily with respect to permits issued, we have further expanded our national project pipeline for onshore wind. The company is heading for a further successful year and as one of the market leaders in Germany, it can bank on a significant tailwind.

Specialist departments in the onshore wind division are currently working on a healthy range of secured, approved projects, guiding them through the various phases from project development and implementation to the commissioning of each wind farm.

To do so, our teams work in close consultation and are fully committed to the task in hand. In the first half of 2025, wpd can once again point to excellent results when it comes to permit procedures. By the end of the year, we can expect to have built appreciably on this success. Further applications have already been submitted or are currently being prepared for submission. The prospects for this year and the coming year are therefore highly auspicious.

At wpd, we have a good number of wind energy projects in various phases of development which our specialist departments are driving at pace towards commissioning drawing on their full range of expertise and experience.

After all, commissioning is the highlight of the implementation phase. For the current year, a total of nine projects are slated for commissioning. On the various construction sites in Germany, our teams are currently coordinating work on the infrastructure, on laying the foundations, on erecting the turbines and on installing the nacelles and rotor blades. For 2026 and 2027, the commissioning of wind and solar farms at wpd can be expected to increase significantly. For all those involved across the various phases of project development and implementation, this means contributing their cumulative expertise and intensive collaboration. The energy transition requires full commitment.

wpd's specialist departments are ideally structured to deliver on this front. They implement our projects with their diverse challenges in the most widely differing conditions imaginable. Our teams pool the very technical expertise, experience and commitment that keep wpd firmly on course among Germany's market leaders.



*Permits:*

**50 projects in 2025**

*Tender processes:*

**more than 450 MW  
awarded in 2024**

**already over 520 MW in 2025**

*Onshore pipeline in Germany:*

**from 6 GW in 2024  
to 15 GW in 2025**



## Ponds, forest borders, fresh grassland –

*How compensation measures are contributing to the energy transition*

Interventions in nature and the landscape are unavoidable when it comes to implementing renewable energy projects. To make up for it, we give something back to the environment elsewhere. Through reforestation, the creation of breeding and feeding habitats for birds or renaturalising bodies of water, we compensate for the interventions necessitated by the energy transition.

To do so, wpd's specialist department for compensation measures works hand in glove with the landscape planning department. In direct consultation with landowners, authorities and municipalities, measures are implemented at a local level which combine nature conservation and species protection concerns with a benefit for the region. The list of successful examples is as long as it is diverse.

In the Laichingen project in Baden-Württemberg, for example, besides reforestation measures and forest conversions in tune with nature, the Hochwang pond was also renaturalised. These ponds are small, temporary bodies of water replenished from rainwater that are characteristic of the Swabian Alb region with a natural or man-made soil layer of compacted clay.

**This special type of water body has been used for centuries as a water reservoir or drinking trough for livestock. However, it is also important as a valuable habitat for amphibians and plants.**

The securing of a long-term water supply by removing trees, desludging and puddling quickly bore fruit as alpine newts and further amphibians became established. A display board at the site provides information on this successful collaboration between wpd, the local nature conservation authority, forestry office and the owner.

The Müssingen project in Lower Saxony constitutes a further example of a successful compensation measure. Here a richly structured woodland border was realised with indigenous species of plants, bushes and trees in an area previously intensively tilled. An area measuring al-



Species-rich herbaceous fringe at the edge of the forest with native plant, shrub, and tree species as a new habitat

most 4,000 m<sup>2</sup> saw the creation of an elongated biotope network serving as a habitat and hunting ground for bats, a wide variety of birds as well as sand lizards and small mammals.

Species diversity was also at the heart of the measure implemented in the Bredentin project in the district of Rostock. Fresh grassland rich in species was created here over an area of 80,000 m<sup>2</sup> (see also front cover photo). Plant diversity is the basis for the proliferation of insect species and small mammals which in turn attract bats and large bird species such as various birds of prey or white storks which find ample food here.

These are just three examples among many successful measures which wpd's specialist department for compensation measures has realised.

Process of renaturation of the "Hochwanghülle" for the settlement of amphibians



Excavation work



Completion of compaction



Renatured "Hülle"





## A major increase in solar energy in the East of Germany



Piling work  
on the Gerbstedt project

The Gerbstedt solar park is the first solar park in eastern Germany developed in-house by wpd and currently by some distance the largest German PV park in its portfolio. After four successfully implemented projects each with approx. 10 MWp in Baden-Württemberg, the Gerbstedt solar park dwarfs their total installed power with 53.5 MWp. The project complements wpd's

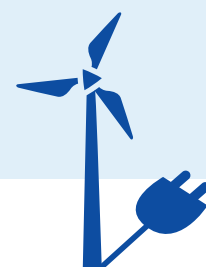
Gerbstedt wind farm which was repowered in 2021. After construction commenced in February, the substructures and solar modules were delivered in the summer and are currently being installed. The solar park is due to be commissioned as early as this year with the electricity generated to be marketed via a Power Purchase Agreement.



## Green future:

### *PPA in Japanese Higashi Izu project*

In Japan, wpd has succeeded in concluding a further Power Purchase Agreement (PPA), a contract for the direct procurement of green electricity. The contractual partner for the PPA is Nomura Real Estate Development Co., Ltd., a leading company in Japan's real estate sector. Nomura will take green electricity generated in the Higashi Izu Furusato onshore wind project and use it to supply carbon-free energy to its new headquarters in Tokyo. The wind farm is currently under construction in the Shizuoka prefecture, around 120 km south-west of Tokyo, on a mountain ridge near the coast.



## Growth in France: *wpd* takes over Calycé

Exciting news from France: We can welcome growth in the wpd Group in the shape of Calycé, a renewable energy company located in the Grand Est region. At the same time, we are taking over most of the wind portfolio encompassing around 20 projects in development. With this strategic step, we are reinforcing our position among the leading project developers in the French market for renewable energies.

wpd France continues to grow and now has almost 180 employees dedicated to the development of wind and solar projects throughout the country. Two important milestones were achieved at the end of last year: the commissioning of our 600th megawatt and the construction of our 42nd wind farm in the country.



The Calycé team



**180**  
members of staff



**42**  
wind farms erected



**600 MW**  
in commissioning



wpd supports  
“women of new energies”

“Women of new energies” – w.one for short – is a strong network of and for women actively involved in the renewables sector. True to the motto, “Connect. Inspire. Empower.”, the organisation offers inspiring network formats, technical impetus and opportunities for exchange and further development.

wpd has recently become a member of w.one, and consequently supports the network’s aim of connecting women from the realm of renewable energies and promoting a balanced ratio of men and women and improved work-life balance in the sector.

## Wind energy goes Virtual Reality: *wpd* Chile identifies new opportunities

In collaboration with Minverso which specialises in the development of Virtual Reality and Mixed Reality systems, wpd Chile has achieved the virtual realisation of a wind farm in the context of digital mining. This shows how customers from the mining industry can integrate wind projects into their operation and supply them-

selves with 100% renewable electricity. wpd Chile and Minverso exhibited the result at the country’s most important mining event, Expomin, where the wpd team was at the same time able to present opportunities for the development of PPA projects for companies in the mining sector.







Luxembourg project Kaffishaff

**53 MW**  
under construction in Germany

**7.2 MW**  
under implementation in Luxembourg

**144 MW**  
under development in France

## Flexible, dynamic, successful – *wpd implements its first projects in Europe*

If conditions change, you have to be able respond flexibly. This applies not least to dynamically growing markets such as the market for solar energy. Here, wpd is continually expanding its activities and has created the pre-conditions for fast, targeted action. To do so, continuous evaluation of the projects is as important as an adaptable project pipeline – key success factors for entering the project implementation phase that wpd has currently reached in an increasing number of PV projects. The environment for this development is becoming increasingly competitive. Regional differences, regulatory changes and volatile supply chains are forcing strategic adaptations to be made. Flexibility in project development is the key to success here.

And wpd can lay claim to this success, above all in its European business where we are currently implementing five PV projects in parallel.

**A total of over 200 megawatts (MW) of installed power is being realised. There is one project with 53 MW under construction in Germany while two PV parks each with 3.6 MW are being realised in Luxembourg. Two projects are also located in France with one PV park in particular standing out with a total output of 140 MW. Project development at wpd is laying down a strong, pioneering marker for the ambitious course that we have set in Europe.**

Sound financial planning is indispensable in this process. We adapt the finance structure variably and expertly to fit the market mechanisms: whether on the basis of long-

term power purchase agreements (PPAs) or fixed feed-in tariffs by successfully participating in national tenders.

Not to be ignored as an important success factor is our close collaboration with experienced partners. In the EPC area (Engineering, Procurement and Construction), wpd banks on reliable companies with a high degree of technical expertise. This also applies on the level of the central project components. The selection of strong suppliers ensures quality and punctuality both in the field of solar technology and grid infrastructure – important aspects for smooth, efficient implementation.

While Europe's solar markets are expanding, the conditions are at the same time becoming more complex. Expertise is not just important for the development and realisation of major PV projects but also for strong positioning in such a dynamic market. wpd brings a wealth of experience, financial strength and know-how to the table enabling it to make a correspondingly expert and strong impression as well as to act accordingly.

And it does so with success. This is demonstrated by a promising project pipeline and not least by strong showings in tenders as in the last two rounds of tenders in France, for example, where our French solar team was able to successfully land a total of seven projects with a capacity of approx. 80 MW. With our upcoming project realisations, we are creating important contributions to a sustainable energy future.



## wpd and “ESG” –

### *Conceiving of sustainability holistically*

Through our wind and solar projects, we make a significant contribution to the global expansion of renewable energies and thus to climate protection. We operate in 33 countries, in Europe and overseas. In the process, we always bear a responsibility for the environment and the people who live in it.

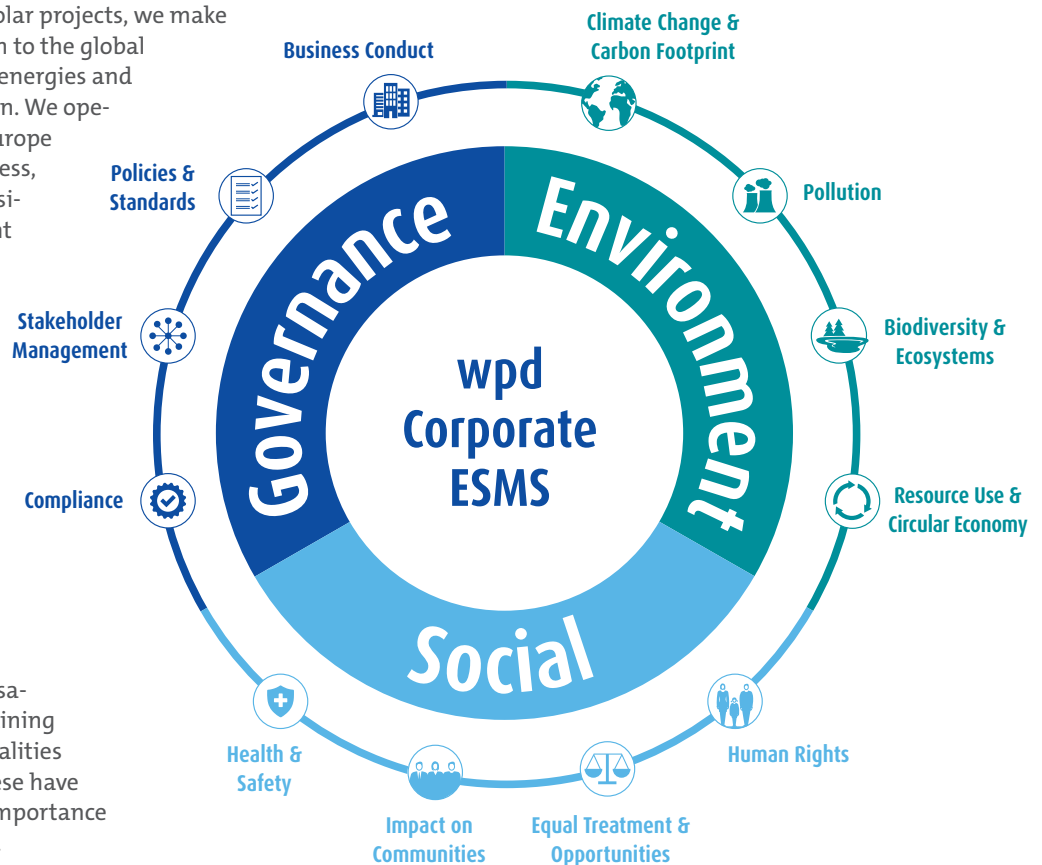
This brings us to three important letters: ESG. They stand for “Environment”, “Social” and “Governance”.

Topics of relevance to ESG can be found in all our activities. Particularly in our projects, we focused from the outset on aspects such as landscape planning, compensation measures or maintaining a dialogue with municipalities and landowners, and these have now gained additional importance from an ESG perspective.

The European Union is increasingly defining sustainability requirements extending beyond the familiar environmental and social topics in our projects. wpd is meeting this demand and has been working intensively on ESG and sustainability issues since 2021, setting up a dedicated department in September 2024. This department manages and coordinates the key sustainability activities at wpd and is responsible for implementing ESG requirements.

**In order to enshrine sustainability not just as a goal but as a practice embraced in the company, wpd has developed a comprehensive system, the Environmental & Social Management System, or ESMS for short. This system comprises central corporate guidelines, among them the E&S and Human Rights Policy as well as various firmly established guidelines for all current and future wpd locations and projects.**

This enables us to standardise processes and at the same time to create economic value added. Projects that meet international ESG criteria are in the long term more viable and more resistant to future challenges. We also avoid potential additional costs or delays as risks are detected at an early stage and mitigated or prevented by means of suitable measures. In addition, the subject of



sustainability and associated reporting now plays an important role with financial institutions and contractual partners.

In France, we are currently developing a project-specific ESMS for three projects for the first time. This is based specifically on the requirements and needs of our contractual partner there, ensuring that external expectations are met besides internal standards.

In Romania, the Fruntiseni project is currently being prepared for imminent financing on the basis of the corporate ESMS. The aim is to address the environmental and social requirements of potential finance partners at an early stage, integrate possible mitigation measures – i.e. measures for the prevention, reduction, restoration and compensation of any impact we may have – into the finance planning on a proactive basis and thereby ideally secure better financing terms and conditions.

ESG is thus far more than a mere combination of letters. The idea behind it is to conceive of sustainability and implement it holistically – for mankind, the environment and for wpd.



# Redispatch 2.0:

*Focus on grids, numbers under control*

With the transition from traditional feed-in management to Redispatch 2.0, responsibilities in the electricity grid have noticeably shifted – from grid operators to operators of technical resources. What was conceived as digitalised intervention to stabilise the grid, is presenting operators with considerable challenges. Mistakes in the coordination process and complexity lead to continual variances and delays. With financial consequences.

**Operators should therefore take a close look and investigate irregularities.**

Alexander Lange,  
Head of Redispatch at wpd windmanager

The redispatch process is complex. It takes technical knowledge to calculate and coordinate the volume of energy lost. The demands made on data management, communication and billing are high. At the same time, many operators lack the capacity to implement the processes efficiently. “But the effort is worthwhile. Every kilowatt hour lost is hard cash”, Lange continues. “Anyone who is unable to implement the process themselves, should rely on experts.” His team currently looks after over 250 wind farms, and it processed around 10,000 redispatch operations last year alone. And the figure is rising.

With Redispatch 2.0, the direct marketer is tasked with the responsibility of the resource provider (EIV). Instead of the yield losses being coordinated between the plant and the grid operator, this is now handled between the grid operator and the producer (BTR). Operators can take on this role themselves or delegate it to direct marketers or service providers. “Experience shows that external service providers usually achieve the best results”, says Lange who is also Chairman of the Redispatch working group. “It often pays for itself with just a few operations per month.”

## What should operators pay attention to when selecting service providers?

The important thing is for the service provider to fulfil the producer role in accordance with the Federal Network Agency’s specifications, respond proactively and forecast yield losses before the initial fees are sent out. Clearing is generally performed within 3 days. Shortfalls must be followed up or counter-proposals submitted. Advantage over direct marketers: “We also offer an ex post payment procedure. This is significantly more lucrative, especially if the number of operations is low”, Lange explains.

## What can operators expect in the future?

According to an internal consultation paper from the Federal Network Agency, the ex post payment procedure will be mandatory across the board from 2027 onwards. Ex post payment requires the constant provision of real-time weather data. “Conversion to the new procedure will be required from this juncture at the latest”, Lange continues. All wind farms will also be converted from the forecasting model to the budget model between 2027 and 2031. The demands will then increase even further.” So it’s good to have experts at your side who can keep their eye on everything and have it all under control.



Alexander Lange  
Head of Redispatch  
at wpd windmanager





**wpd onshore GmbH & Co. KG**

**wpd Solar GmbH**

**wpd europe GmbH**

Stephanitorsbollwerk 3 (Haus LUV)  
28217 Bremen  
T + 49 (0) 421 168 66-10  
F + 49 (0) 421 168 66-66  
info@wpd.de

**wpd windmanager GmbH & Co. KG**

Stephanitorsbollwerk 3 (Haus LUV)  
28217 Bremen  
T + 49 (0) 421 897 660-0  
F + 49 (0) 421 897 660-99  
windmanager@wpd.de

[wpd.de](http://wpd.de)  
[windmanager.de](http://windmanager.de)

## Legal notice

### Publisher

wpd GmbH  
Stephanitorsbollwerk 3  
(Haus LUV)  
28217 Bremen  
T + 49 (0) 421 168 66-10  
F + 49 (0) 421 168 66-66  
info@wpd.de




### Editorial

Christian Schnibbe  
Dr. Jens Feldmann

### Photos

wpd  
adobestock.com

### Social Media

 [@wpd.gmbh](https://www.instagram.com/wpd.gmbh)  
 [@wpd GmbH](https://www.linkedin.com/company/wpd-gmbh)  
 [@officialwpd](https://www.youtube.com/channel/UC...)



*think energy*